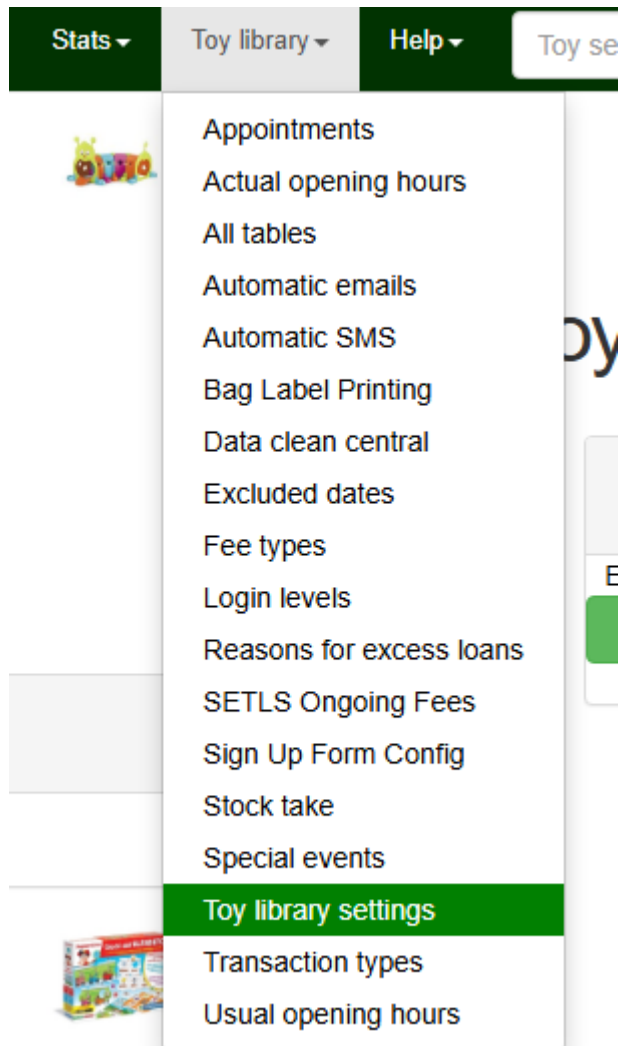
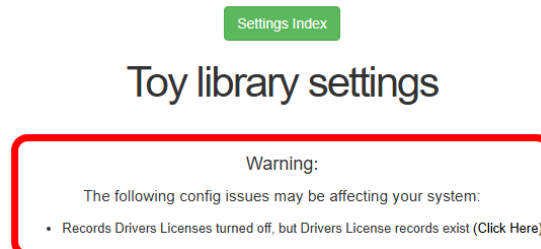


# How do I load our logo?

You can upload - or update - your organisation logo under the Toy Library>Toy library settings menu



Click the Edit button



If you are unsure of any of these settings please email us at [admin@setls](mailto:admin@setls).

In the Public Homepage settings, where the Logo (website) is shown, click on Choose file to upload a new logo.

---

## Public Homepage

Logo (Website)



Choose file

No file chosen

---

Revision #3

Created 26 May 2026 01:56:41 by Mel R

Updated 26 May 2026 02:07:17 by Mel R